

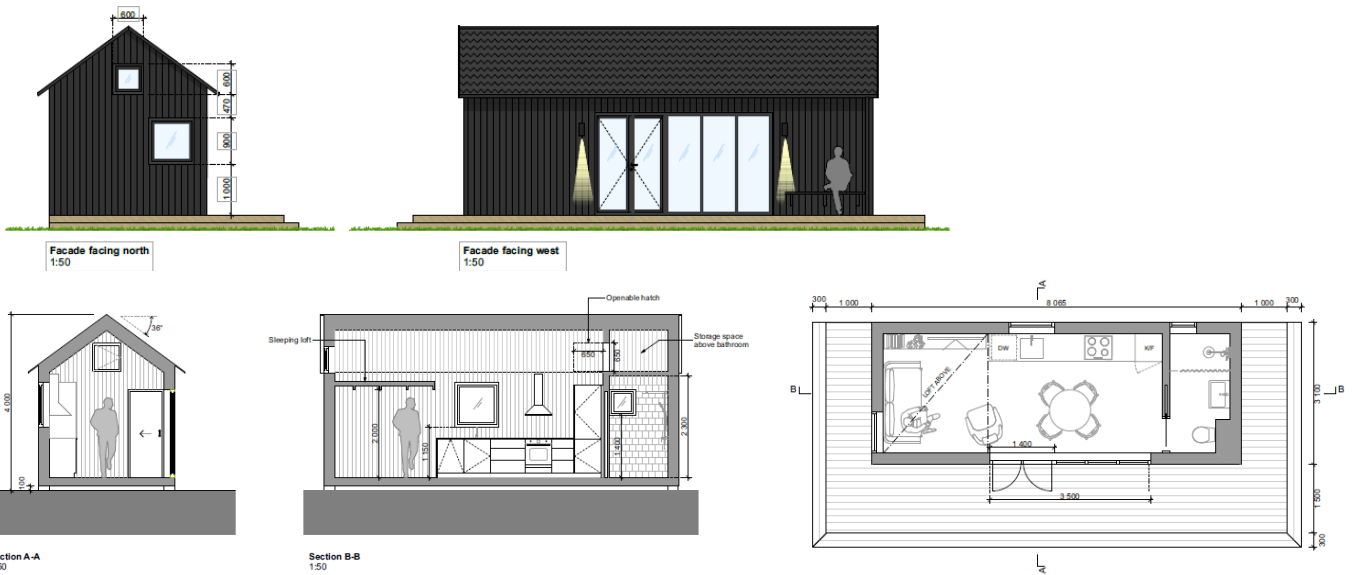
PREPARED FOR:

DATE:

EXPIRES:

QUOTE #:

c / o 25 Attefallshuss with alcove



	SEK	EUR
TOTAL AREA (m²)		25,00
SUBTOTAL		39 207,00
VAT (21%)		8 233,47
TOTAL price/m²		47 440,47
		1897,62

#	position	option
1	Wood-frame house design Construction drawings, Foundation drawings	included
2	External walls (55,12 sq m) Vertical wooden boards, treated, Nails (hot dip galvanized), Lathing (25x50mm), Screws (galvanized), Lathing (25x50mm), Screws (galvanized), OSB 3 (10mm), Screws (galvanized), Diffusion membrane (Tyvek), Rat mash, Timber frame (45x145mm), Nails, Screws (galvanized), ISOVER KL-37 insulation (150mm), Isover SKC-20 OSB 3 (10mm), Screws (galvanized) Vapor barrier (ELT-PEFOIL), Lathings (28x70mm), Screws (galvanized), Interior cladding- wooden boards, Staples (electrochemically galvanized),	included
3	Internal walls (19,22 sq m) Interior cladding- wooden boards , Staples (electrochemically galvanized), OSB 3 (10mm), Screws (galvanized) Timber frame (45x95 mm), Nails, Screws (galvanized), Heat insulation Isover (100mm), OSB 3 (10mm), Screws (galvanized) Interior cladding- wooden boards white, Staples (electrochemically galvanized), In wet rooms - Tiles 15x15	included

PREPEARED FOR:

MR. :

COMPANY:

DATE:

EXPIRES:

QUOTE #:

c / o 25 Attefallshuss with alcove

4	Floor panels in wet rooms (4 sq m) Tiles 10x10cm Hydro insulation OSB 3 (22mm), Screws (galvanized) Timber frame (45x175mm), Nails, Screws (galvanized), ISOVER KL-37 insulation (170mm), Isover SKC-20 , Wind paper Plywood plates waterproof 10mm	included
5	Floor panels (21 sq m) Solid wood OSB 3 (22mm), Screws (galvanized) Timber frame (45x175mm), Nails, Screws (galvanized), ISOVER KL-37 insulation (170mm), Isover SKC-20 , Wind paper Plywood plates waterproof 10mm	included
6	Roof panel Roof shingles, Black OSB 3(22mm), Screws (galvanized), Lathing (25x50mm), Screws (galvanized), Bitumen membrane Wood board deck Lathing (45x45mm) for air gap, Screws (galvanized), Wind paper Timber frame (45x195mm), Nails, Screws (galvanized), ISOVER KL-37 insulation (200mm), Isover SKC-20 , Vapor barrier (ELT-PEFOIL), Lathings (28x70mm), Screws (galvanized), Standing wooden boards , Nails (electrochemically galvanized),	included
7	WWL wooden windows (Uv=0,8 W/m²K) (2,8 sq m) 92 mm profile windows (three glasses), Outside sill (200mm) PU, Window and door box finishing with SHk 21x120 wood boards, Nails (hot dip galvanized),	included
8	WWL wooden external doors (Uv=0,8 W/m²K) (1 pcs) 92 mm profile doors (three glasses) (1 pcs), Outside sill (200mm) PU, Window and door box finishing with SHk 21x120 wood boards, Nails (hot dip galvanized),	included
9	Internal doors (1 pcs) Wooden internal sliding doors (1 pcs)	included
10	Kitchen furniture and equipment	included
11	Bedroom furniture	not included
12	Ladder and railings for alcove	included
13	Bathroom equipment WC bowl, Sink with washbasin mixer tap, Shower mixer, Towel drayer, Towel holder, toilet paper holder, WC brush Shower enclosure Water heater 50l,	included

PREPEARED FOR:

MR. :

COMPANY:

DATE:

EXPIRES:

QUOTE #:

c / o 25 Attefallshuss with alcove

- | | |
|--|----------------------------|
| <p>14 Electricity, ventilation, heating
 Power cables, Junction box
 Sockets, switches Renova from Schneider Electric, polarwhite
 Outdoor lamps B(2 pcs)
 Adax Neo White Electric Panel Heater - wall mounted
 Ceiling Lamp- with AC outlets
 Towel dryer radiator STI 50/70 stick 500x700,
 Humidity sensing automatic fan,</p> | <p>included</p> |
| <p>15 Plumbing
 Sewer pipes ø50, Sewer pipes ø110, Water pipes ø18</p> | <p>included</p> |
| <p>16 Gutters (22 m)
 Metal gutters</p> | <p>included</p> |
| <p>17 Transportation (1 trucks)
 Transportation to Stockholm</p> | <p>included</p> |
| <p>18 Crane for unloading</p> | <p>not included</p> |